



Iowa Public Employees' Retirement System Retiree Update | Winter 2019

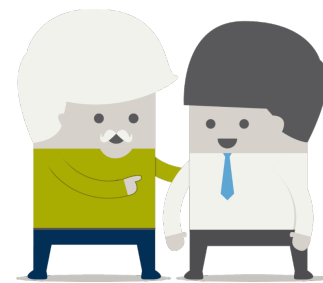
Is your info up-to-date?

Log into [My Account](#) to make sure we have your correct information. Be sure to provide your **personal email address** since your work email is no longer valid. Check to make sure your beneficiary information is correct - it's easy to do and your loved ones will appreciate it.

What advice would you give to your younger self?

If you knew then what you know now, what would you have done differently to prepare for retirement? What worked? Help prepare the next generation of IPERS members by sharing your experiences.

Send your advice to us at info@ipers.org or post on our [Facebook page](#).



What if you want to go back to work?

After retirement, you may decide to work again. It's important to understand how this decision may affect your IPERS benefits. For information about how employment may affect your benefits, read the [Returning to Work After Retirement Guide](#) or call [IPERS](#).

Follow us on social media

Stay informed by connecting with us on [Facebook](#), [Twitter](#), [LinkedIn](#), and [YouTube](#).

STAY CONNECTED



www.ipers.org | info@ipers.org | 1-800-622-3849

If this message was forwarded to you, and you'd like to receive future communications directly from IPERS, add your email address to your contact information in [My Account](#).

This newsletter is published by the Iowa Public Employees' Retirement System. Permission is granted to reprint articles, copy, and distribute this newsletter freely within Iowa state and local governments, associations of IPERS members, and employers affiliated with IPERS.

P.O. Box 9117, 7401 Register Drive, Des Moines, IA 50306-9117

[Unsubscribe](#) | [About our service provider](#)

